

NEXT CHAPTER

2003 / 2022 BENETTI 180' 6" (55.02m)



General Description:

BUILDER:	BENETTI	
YEAR BUILT:	2003	
YEAR REFIT:	2022	
L.O.A (ft/m):	180' 6" (55.02m)	
BEAM (ft/m):	34' 2" (10.41m)	
CRUISE SPEED:	14 Knots	ASKING PRICE:
MAX. SPEED:	16 Knots	\$19,900,000 USD
FLAG:	Cayman Islands	
LOCATION:	Fort Lauderdale, Florida United States	
STATEROOMS:	6	
GUESTS:	13	

Yacht's particulars in this report are believed to be correct at time of print but accuracy of contents is not guaranteed, nor can they be used for contractual purposes. The yacht is offered subject to still being available for sale. Price may be changed or vessel may be withdrawn without prior notice

NEXT CHAPTER

2003 / 2022 BENETTI 180' 6" (55.02m)

Main Characteristics:

Builder:	BENETTI
Exterior Designer:	Stefano Natucci
Interior Designer:	Stefano Natucci
Classification:	Lloyd's
MCA Compliant:	Yes
Engines/Type:	Caterpillar 3512 B
Fuel Capacity:	34870 Gal
Water Capacity:	5944 Gal
Gross Tonnage:	909.00
Range (nm):	7000
L.O.A:	180' 6" (55.02m)
Beam:	34' 2" (10.41m)
Draft:	10' 3" (3.12m)
Hull Material:	Steel
Fuel Type:	Diesel

Accommodation:

Guest:	6 Staterooms / 13 Guests
Crew:	For 14

NEXT CHAPTER

2003 / 2022 BENETTI 180' 6" (55.02m)

NEXT CHAPTER 180'6"/55m Benetti 2003/2022



NEXT CHAPTER 180'6"/55m Benetti 2003/2022 - Aerial Jacuzzi



Yacht's particulars in this report are believed to be correct at time of print but accuracy of contents is not guaranteed, nor can they be used for contractual purposes. The yacht is offered subject to still being available for sale. Price may be changed or vessel may be withdrawn without prior notice

NEXT CHAPTER

2003 / 2022 BENETTI 180' 6" (55.02m)

NEXT CHAPTER 180'6"/55m Benetti 2003/2022 - Jacuzzi`



NEXT CHAPTER 180'6"/55m Benetti 2003/2022 - Sundeck Bar and Dining



Yacht's particulars in this report are believed to be correct at time of print but accuracy of contents is not guaranteed, nor can they be used for contractual purposes. The yacht is offered subject to still being available for sale. Price may be changed or vessel may be withdrawn without prior notice

NEXT CHAPTER

2003 / 2022 BENETTI 180' 6" (55.02m)

NEXT CHAPTER 180'6"/55m Benetti 2003/2022 - Sundeck Aft Lounge; Outdoor Theater



NEXT CHAPTER 180'6"/55m Benetti 2003/2022 - Bridge Deck Aft Dining and Lounge Area



Yacht's particulars in this report are believed to be correct at time of print but accuracy of contents is not guaranteed, nor can they be used for contractual purposes. The yacht is offered subject to still being available for sale. Price may be changed or vessel may be withdrawn without prior notice

NEXT CHAPTER

2003 / 2022 BENETTI 180' 6" (55.02m)

NEXT CHAPTER 180'6"/55m Benetti 2003/2022 - Sky Lounge



NEXT CHAPTER 180'6"/55m Benetti 2003/2022 - Sky Lounge



Yacht's particulars in this report are believed to be correct at time of print but accuracy of contents is not guaranteed, nor can they be used for contractual purposes. The yacht is offered subject to still being available for sale. Price may be changed or vessel may be withdrawn without prior notice

NEXT CHAPTER

2003 / 2022 BENETTI 180' 6" (55.02m)

NEXT CHAPTER 180'6"/55m Benetti 2003/2022 - Sky Lounge



NEXT CHAPTER 180'6"/55m Benetti 2003/2022 - Sky Lounge



Yacht's particulars in this report are believed to be correct at time of print but accuracy of contents is not guaranteed, nor can they be used for contractual purposes. The yacht is offered subject to still being available for sale. Price may be changed or vessel may be withdrawn without prior notice

NEXT CHAPTER

2003 / 2022 BENETTI 180' 6" (55.02m)

NEXT CHAPTER 180' 6"/55m Benetti 2003/2022 - VIP Ensuite



NEXT CHAPTER 180' 6"/55m Benetti 2003/2022 - VIP Ensuite



Yacht's particulars in this report are believed to be correct at time of print but accuracy of contents is not guaranteed, nor can they be used for contractual purposes. The yacht is offered subject to still being available for sale. Price may be changed or vessel may be withdrawn without prior notice

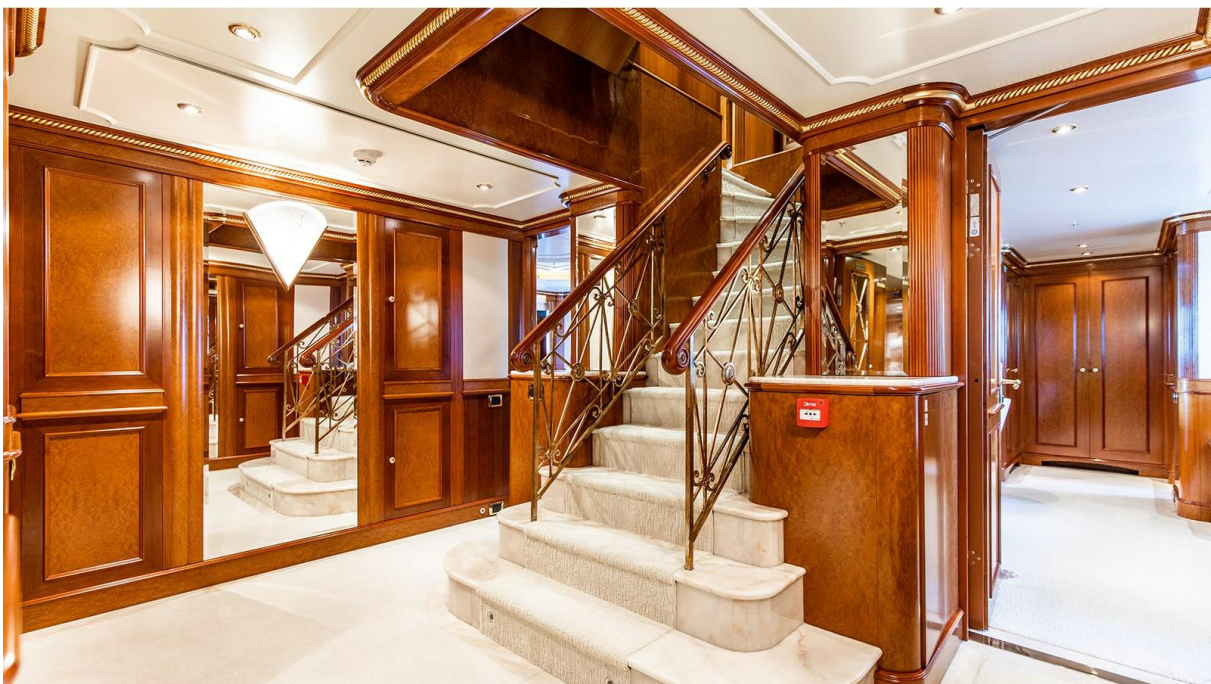
NEXT CHAPTER

2003 / 2022 BENETTI 180' 6" (55.02m)

NEXT CHAPTER 180'6"/55m Benetti 2003/2022 - Wheelhouse



NEXT CHAPTER 180' 6"/55m Benetti 2003/2022 - Staircase to Main Deck



Yacht's particulars in this report are believed to be correct at time of print but accuracy of contents is not guaranteed, nor can they be used for contractual purposes. The yacht is offered subject to still being available for sale. Price may be changed or vessel may be withdrawn without prior notice

NEXT CHAPTER

2003 / 2022 BENETTI 180' 6" (55.02m)

NEXT CHAPTER 180'6"/55m Benetti 2003/2022 - Main Deck Aft



NEXT CHAPTER 180'6"/55m Benetti 2003/2022 - Main Deck Aft



Yacht's particulars in this report are believed to be correct at time of print but accuracy of contents is not guaranteed, nor can they be used for contractual purposes. The yacht is offered subject to still being available for sale. Price may be changed or vessel may be withdrawn without prior notice

NEXT CHAPTER

2003 / 2022 BENETTI 180' 6" (55.02m)

NEXT CHAPTER 180'6"/55m Benetti 2003/2022 - Main Salon



NEXT CHAPTER 180'6"/55m Benetti 2003/2022 - Master Stateroom



Yacht's particulars in this report are believed to be correct at time of print but accuracy of contents is not guaranteed, nor can they be used for contractual purposes. The yacht is offered subject to still being available for sale. Price may be changed or vessel may be withdrawn without prior notice

NEXT CHAPTER

2003 / 2022 BENETTI 180' 6" (55.02m)

NEXT CHAPTER 180'6"/55m Benetti 2003/2022 - Master Stateroom



NEXT CHAPTER 180'6"/55m Benetti 2003/2022 - Master Stateroom



Yacht's particulars in this report are believed to be correct at time of print but accuracy of contents is not guaranteed, nor can they be used for contractual purposes. The yacht is offered subject to still being available for sale. Price may be changed or vessel may be withdrawn without prior notice

NEXT CHAPTER

2003 / 2022 BENETTI 180' 6" (55.02m)

NEXT CHAPTER 180'6"/55m Benetti 2003/2022 - Master Observation Lounge



NEXT CHAPTER 180'6"/55m Benetti 2003/2022 - Master Observation Lounge



Yacht's particulars in this report are believed to be correct at time of print but accuracy of contents is not guaranteed, nor can they be used for contractual purposes. The yacht is offered subject to still being available for sale. Price may be changed or vessel may be withdrawn without prior notice

NEXT CHAPTER

2003 / 2022 BENETTI 180' 6" (55.02m)

NEXT CHAPTER 180'6"/55m Benetti 2003/2022 - Master Ensuite



NEXT CHAPTER 180'6"/55m Benetti 2003/2022 - Master Ensuite



Yacht's particulars in this report are believed to be correct at time of print but accuracy of contents is not guaranteed, nor can they be used for contractual purposes. The yacht is offered subject to still being available for sale. Price may be changed or vessel may be withdrawn without prior notice

NEXT CHAPTER

2003 / 2022 BENETTI 180' 6" (55.02m)

NEXT CHAPTER 180'6"/55m Benetti 2003/2022 - Lower Deck Guest Foyer



NEXT CHAPTER 180'6"/55m Benetti 2003/2022 - Queen Ensuite



Yacht's particulars in this report are believed to be correct at time of print but accuracy of contents is not guaranteed, nor can they be used for contractual purposes. The yacht is offered subject to still being available for sale. Price may be changed or vessel may be withdrawn without prior notice

NEXT CHAPTER

2003 / 2022 BENETTI 180' 6" (55.02m)

NEXT CHAPTER 180'6"/55m Benetti 2003/2022 - Queen Ensuite



NEXT CHAPTER 180'6"/55m Benetti 2003/2022 - Twin Ensuite



Yacht's particulars in this report are believed to be correct at time of print but accuracy of contents is not guaranteed, nor can they be used for contractual purposes. The yacht is offered subject to still being available for sale. Price may be changed or vessel may be withdrawn without prior notice

NEXT CHAPTER

2003 / 2022 BENETTI 180' 6" (55.02m)

NEXT CHAPTER 180'6"/55m Benetti 2003/2022 - Twin Ensuite



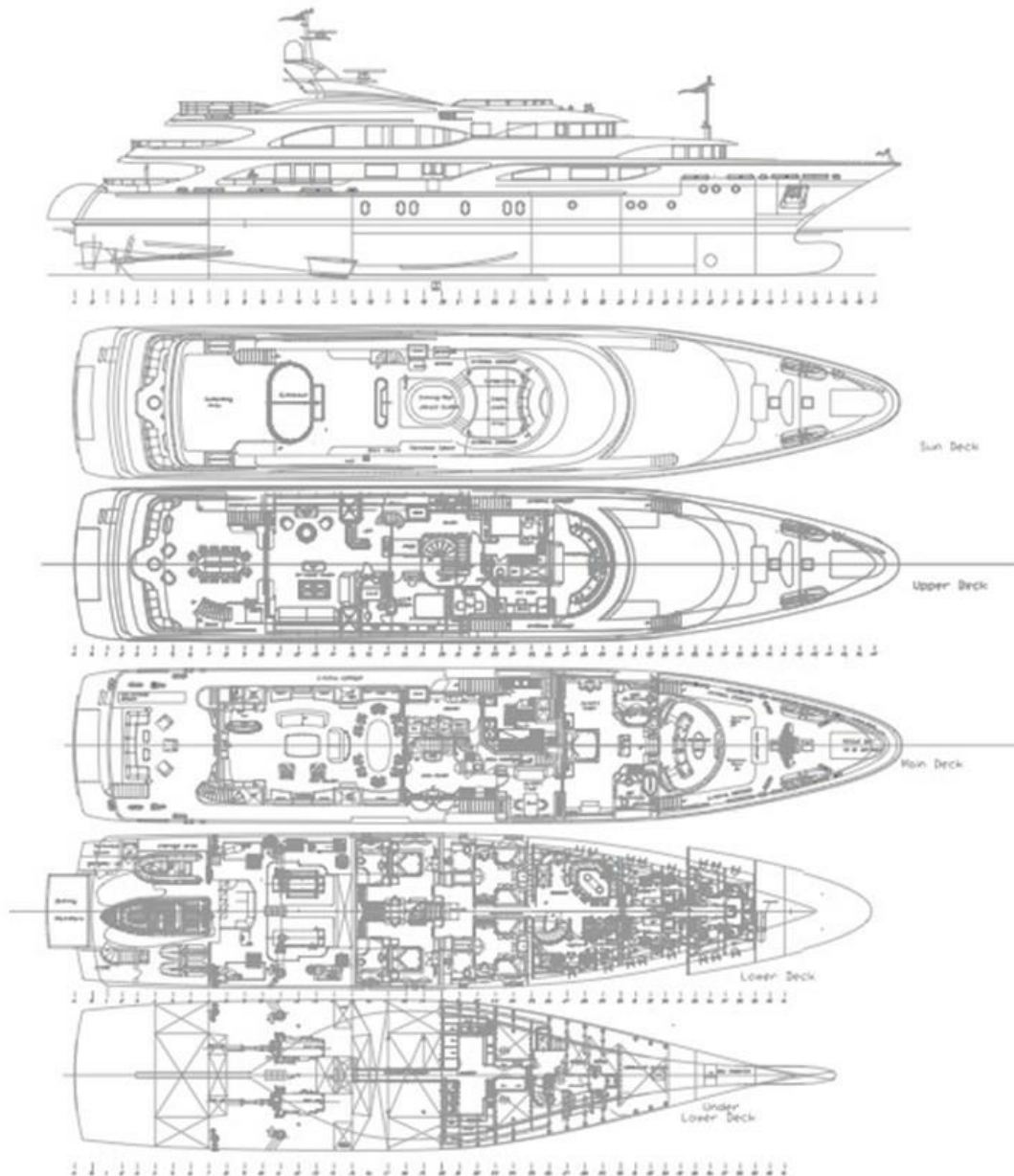
NEXT CHAPTER 180'6"/55m Benetti 2003/2022 - Swim Platform/Beach Club



Yacht's particulars in this report are believed to be correct at time of print but accuracy of contents is not guaranteed, nor can they be used for contractual purposes. The yacht is offered subject to still being available for sale. Price may be changed or vessel may be withdrawn without prior notice

NEXT CHAPTER

2003 / 2022 BENETTI 180' 6" (55.02m)



Yacht's particulars in this report are believed to be correct at time of print but accuracy of contents is not guaranteed, nor can they be used for contractual purposes. The yacht is offered subject to still being available for sale. Price may be changed or vessel may be withdrawn without prior notice

NEXT CHAPTER

2003 / 2022 BENETTI 180' 6" (55.02m)

Accommodation: NEXT CHAPTER 180'6" Benetti 2003/2022 Tri Deck Motoryacht

NEXT CHAPTER provides six luxurious staterooms for up to 13 guests. Her main deck, full beam, split level Master ensuite with panoramic views, observation area and private study is one of the many highlights of NEXT CHAPTER. Her VIP ensuite is located on the bridge deck followed by two queen staterooms, two twin staterooms, and one pullman bed as required on the lower deck. All staterooms are equipped with iPad and Plex television, offering Satellite TV.

Entering the stunning master ensuite, you walk through the private study then to the master stateroom passing the King bed that faces the TV in a central cabinet. The stairs leading to the observation lounge has white marble columns with braided rope paneling. His and her ensuites have jet tubs and glass showers.

The VIP ensuite is located on the bridge deck near the sky lounge. The ensuite is shared with the sky lounge and has breathtaking shower views. Décor in the accommodation is just as palatial as the social areas, with all new bed linen, beautiful joinery, high ceilings and ample space for storage.

The sky lounge area is used as the family television/game area. With two long couches to port in white plus four bucket chairs to starboard around an ottoman, it's a comfortable place to relax in the evening. A Scrabble table with upholstered chairs is to starboard. The room has light brown mahogany paneling, white ceiling indentation with indirect lighting. The sky lounge opens onto an enormous bridge aft deck with a long varnished dining table that can seat up to 12 guests. Two L-shaped settees are in blue.

Headed to starboard side up the teak stairs to the sundeck, you will find a state-of-the-art air-conditioned gym, a comfortable six person jacuzzi and multiple lounge areas to make the most of your time relaxing in the sun.

Master – Main deck

VIP Suite - Bridge deck, starboard side, forward of the bridge deck sky lounge

Guest Staterooms (all ensuite) – Lower Deck

- 2 Queen
- 1 Twin
- 1 Twin with Pullman

NEXT CHAPTER

2003 / 2022 BENETTI 180' 6" (55.02m)

Specs: NEXT CHAPTER 180'6" Benetti 2003/2022 Tri Deck Motoryacht

NEXT CHAPTER 180'6" Benetti 2003/2022 Tri Deck Motoryacht

General

Length Overall: 180.6 feet

Beam: 34.12 feet

Draft: 10 feet

Tonnage: 909 GT 272 net tons 821 light ship displacement tons

Capacities

Fuel Capacity - 38,874 US Gal

Water Capacity - 5,944 US Gal

X2 Watermakers - 7,228 gallons per day each

Lube Oil - Gal 396

Waste Oil - 388 US Gal

Grey Water - 1,215 US Gal

Consumption per hour RPM

Maximum 16 knots 146 Gal/hr 1500 RPM

Cruising 14 knots 90 Gal/hr 1250 RPM

Economical 11 knots 59 Gal/hr 1080 RPM

Machinery

Main Engines- Twin Caterpillar 3512 B Diesel Engines @ 1850HP each. Engines received a top end overhaul in 2018 and engine hours are recorded as of June 2023.

Engine:

- Port - 17,143
- Stbd - 17,154

Gear Boxes for Main Engines- X2 ZF Marine

Drive: X2 Detra 5- Blade fixed pitch propellers

Generators & Electricity

Output- 380V/3 Phase/50 Hz

Generators- X2 155kW Northern Lights. Gen hours are recorded as of June 2023.

NEXT CHAPTER

2003 / 2022 BENETTI 180' 6" (55.02m)

Gen 1, Current hours since major overhaul in 2019:

- Port - 5,257
- Stbd - 7,434

Gen 2, Current hours since installation in 2003:

- Port - 46,821
- Stbd - 50,965

X1 26kW Northern Lights Emergency Generator - 101hrs - Fuel Consumption- 6 Gal/hr

Shore Power: Magnus Converter installed in 2022

Model: SP200-0200B-2150E

Description: 200 KVA Shore Power Converter

INPUT:

- 3 Phase
- Voltage: 180-250 VAC
- Frequency: 45-65Hz
- Current: X2 150 Amps

OUTPUT:

- 3 Phase
- Voltage: 400/230 VAC
- Frequency: 50Hz
- Current: 300 Amps
- Power: 200 KVA

Air Conditioning

Manufacturer- X2 Bitzer units

Tons- 119

BTU- 1,427,640

Interior Fresh Air System BTU- 654,335

Number of Air Handling Units- AHU 5/ FC 28

Watermakers

X2 H.E.M. Series 40

NEXT CHAPTER

2003 / 2022 BENETTI 180' 6" (55.02m)

Stabilizers

X4 NAIAD Dynamics Zero Speed Model 525/3575

Bow Thruster

X1 Samos VT140 177hp (132 kW)

Fuel Filtration - ALFA Laval MAB 103B-248811450901

Bilge Water Filtration - DV2 500 VC-Oilmaster

Sewage System - Hamann HL-Cont

Fresh Water System - H.E.M. SCL SP-55

Steering System - B.C.S. Srl CL 1550

Backup Emergency Steering - B&C P63SP10/SCSF

Helm Control Stations - (4) located on the Bridge, Port Wing Station, Starboard Wing Station, and Garage area (starboard side)

Communication, Navigation & Entertainment Systems

Starlink Maritime Internet

Satcom - Sailor 6018 Sat-com Panasonic

Telephone - Panasonic

SSB - Sailor HC 4500 Kx- T7536

VHF Fixed – X2 Sailor 6222 VHF DSC

VHF Handheld - X2 iCom GMDSS

Ships Computer - Apple mini/ X2 Macbook pro

Printer - HP Envy 5544

Internal Ships Communication System - UHF radios Motorola

Radar - X2 Northrop Grumman X Band range 96nm

Autopilot - C-Path navipilot

Gyrocompass - Sperry Navigat-XXMK1

Compass - C-plath (M)

Depth Sounders - A/T

SatNav - Sat-C

GPS - X2 Furuno GP-170

Plotter Software - Navi-Sailor 3000

NavTex - Furuno FA+170

Weather Fax - Furuno Navtex NX-700

Wind Indicator - AT anemometer

NEXT CHAPTER

2003 / 2022 BENETTI 180' 6" (55.02m)

Entertainment Systems

Quantity Brand & Model

X11 TV – Sony, Samsung, Thompson, LG

X10 Stereo – Denon

X10 CD Player – Sony BDP-51500

X12 iPod Stations – (7) Lenovo, (5) iPad

Central Ships Audio Sonos + RTI

Central Ships Video Plex

Deck Equipment

Anchor Windlass System - Electric Motor-Gearbox, rebuilt in 2019

Anchors - X2 Danforth pool-N

Anchor Chain – X9 shackles port, X5 shackles stbd

Deck Capstans - X2 electric motor located on deck aft port side

Main Tender Davit - Motomar SWL2275kg

Additional Tender Davit Motomar SWL1000kg

Accommodation Ladders X1 Manual, X1 Electric-Hydraulic Motomar stern boarding gangway Spot Lights - X4

Security, Safety & Firefighting Equipment

CCTV System Exacqvision

X7 Cameras

X2 Monitors

Door Alarms – Key Entry

X7 Ships Safes

Fire Fighting - All Items Listed Replaced in 2022

Fire/Heat/Smoke Detectors - X87 all throughout the yacht

Fixed CO2 Fire System - X1 in the Galley/ CO2 tank

High Fog System - X1 Ultra Fog Sprinkler with 114 head total

Portable CO2 - X1 18 kg in engine room

Fire Extinguishers - X28 regular X4 foam X6 CO2

Safety Equipment

X4 Life Rafts - Elliot 16 Pax SOLAS A

X8 Life Rings - (2) light (2) smoke light (2) line (2) plain

X2 EPIRBs - ACR RBL-36

NEXT CHAPTER

2003 / 2022 BENETTI 180' 6" (55.02m)

X2 28 – Flares - Ikaros handheld/parachute/smoke

Full medical supplies onboard

Galley & Laundry Equipment

Oven - Rational- Steam

Microwave - Miele 900W

Refrigeration - (2) Tall gram (1) Walk in

Freezer - (2) Tall gram (1) Walk in

Icemakers - (1) Electrolux

Dishwasher - (1) Hobart

General Equipment

X1 Thermomix

X1 15L Zanussi Fryer

X1 electrolux flat grill

X 10 pots

X10 pans

X1 paco jet ice maker

X4 grill pans

X1 grinder

X1 pasta maker

X2 Dumbwaiters on Main Deck and Sundeck

Red & White Wine eurocave compact cooler

Laundry Equipment

X3 Main Laundry Washers Miele

X3 Main Laundry Dryers Miele

Tenders & Toys

Tenders:

5.8m (19ft) Novurania

3.9m (13ft) Inflatable RHIB AB tender

Toys:

X2 2022 Sea Doo Spark Trixx

X2 Sea kayaks

X2 SeaBobs

X2 Stand up paddle boards

Waterskis

Kneeboard

NEXT CHAPTER

2003 / 2022 BENETTI 180' 6" (55.02m)

Wakeboards & towable toys

Waterslide from the bow

Inflatable trampoline

Snorkeling gear

Beach BBQ

Sundeck/Gym Equipment

Walk around over-sized 6 person Jacuzzi on top deck

Air Conditioned Gym

Peloton Bike

Endurance E500 Elliptical

Yoga Equipment

Lifefitness T7i Treadmill

Rowing Machine

Weight Bench

Le Mond Revmaster Spinning Bike

Dumbbells

2022 Yard Period:

- Power Management System & Alarm Monitoring System - Designed by Tess Electric
- x2 Magnus Shore Power converters
- New Teak on the brow and bridge deck
- All through hulls replaced
- All tanks inspected
- Fresh water tanks - sandblasted and recoated
- AC system serviced, and new coolant added to all compressors and air handlers
- Out-of-water portion of 20yr completed during this yard period (all rudder shaft seals, cutlass bearings, shaft seals, stabilizer seals were replaced in 2019)
- All Exterior cushions renewed
- Interior - Stew Pantry, Crew mess, and galley floor renewed with new Teak and Holly

Current 2023 Shipyard Period:

- Main Engines will go under a complete overhaul
- Transmission rebuild
- Replace all hydraulic pumps on PTO's

NEXT CHAPTER

2003 / 2022 BENETTI 180' 6" (55.02m)

- Sanitary tank to be rebuilt
- New inverter on bridge for all navigation equipment
- New Radars
- New Gyro
- New Oven in Galley is being added
- New Carpet Throughout
- New Soft goods in the crew mess
- New galvanized engine room flooring

Exclusion List:

- 45' 2020 Seahunter Tournament with quad 425HP Yamaha
- Tournament Fishing/Spearfishing Gear